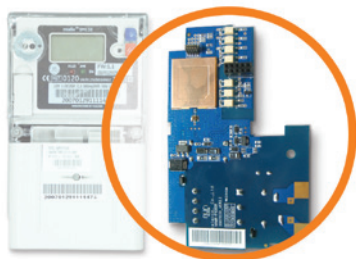




PRODUCT BRIEF



Wireless Electricity Meter Interface Unit Family

AiMiR 2.4GHz AMI Communications Network

Description



Wireless Meter Interface Units (MIUs) are part of Nuri Telecom's family of end-to-end AiMiR Advanced Metering Infrastructure (AMI) connectivity solutions. They transform standalone smart electricity meters into an integral part of the Smart Grid network.

Smart electric meters embedded with Nuri MIU communicate utilization data and power quality information to a utility over Nuri's AiMiR AMI network. AiMiR is a two-way wireless mesh Local Area Network to an AiMiR gateway. The gateway communicates the data directly to the AiMiR Head End Server located at the utility data center over a commercially available two-way data communication network.

This networking arrangement allows utilities to take advantage of a wide range of cutting-edge Smart Grid applications, including advanced metering, outage and restoration detection, demand response, innovative tariffs, remote connect and disconnect, and other major ones.

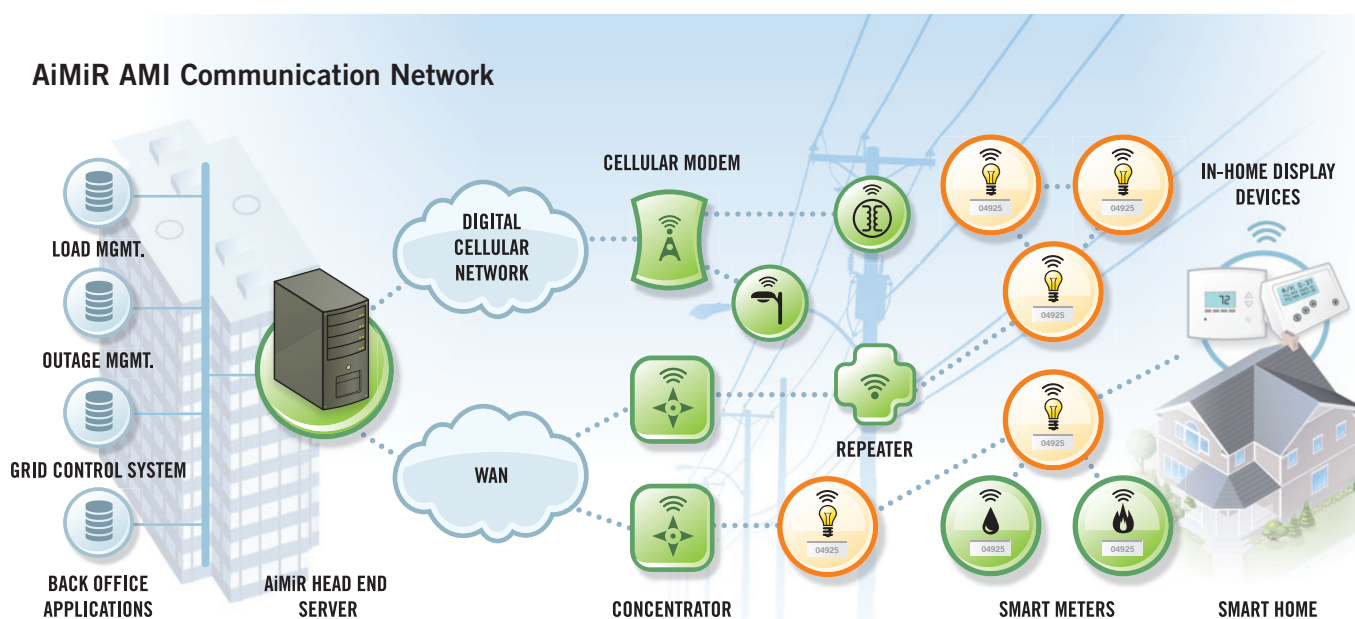
Nuri's MIU-equipped smart electricity meters make networking simple, easy to deploy, and provide utilities with true connectivity.

Nuri offers a variety of form fit MIUs for a broad range of smart electric meters from the industry's leading manufacturers. In the unlikely event, a particular MIU isn't available for a meter a utility company selects, Nuri can design it in collaboration with the meter manufacturer within a short period of time.

Features & Benefits

- Enables smart meters for two-way wireless communications
- Connects smart meters in a wireless mesh Local Area Network
- Based on open, standards-based design
- Supports high 250 kbps data rate
- Provides secure, real-time, advanced metering and smart grid information
- Sends power outage/restoration notification
- Provides "Over-the-air" upgrades and meter programming
- Supports wide range of smart meters from leading meter manufacturers

AiMiR AMI Communication Network



Utility Data
Center

Backhaul
Communication Services

AiMiR Wireless Advanced
Metering Infrastructure

Home Area
Network

MIU Specifications

Communications

Frequency Range	2.4GHz-2.48GHz
Technology	DSSS
Data Rate	250kbps
Transmit Power	100mW
Receiver Sensitivity	<-100dBm

Physical Interface

Meter Interface	Serial or infrared
Antenna	2dBi dipole (optional extension antenna)

Networking/Security

Encryption	128-bit AES
IDs and Channels	PAN ID, 64-bit IEEE MAC, 16 channels
ZigBee	ZigBee Pro
Standard	IEEE 802.15.4

Environmental

Operating Voltage	176VAC-264VAC, 50/60Hz
Operating Temperature	-40°C to +70°C
Power Consumption	1W (max)
Humidity	10% to 95%, non-condensing
RoHS	Compliant

Regulatory Approvals

IEC, ANSI	Compliant
-----------	-----------

NURI Telecom Corporate Headquarters

B-10F Woolim Lion's Valley 371-28,
Gassan-dong Geumcheon-gu,
Seoul, 153-786 Korea
Phone: +82.2.781.0607
Fax: +82.2.781.0704

NURI Telecom USA Co., Inc.

8 Corporate Park, Suite 300
Irvine, California 92606 USA
Phone: +1.949.442.8347

sales@nuritelecom.com
www.nuritelecom.com



End-to-End AMI Solution

Nuri in collaboration with its technology partners and system integrators offers utilities end-to-end, turnkey AMI delivery models including performance guarantees:

Components of AiMiR Communication Network



Electric Meters*



Gas Meters*



Water Meters*



AiMiR Concentrator

Connects AMI network to utility monitoring site



AiMiR Repeater

Extends AMI network range to cover larger areas



Digital Cellular Modem

GSM/GPRS, CDMA



AiMiR Software Suite

Network mgmt, advanced metering and Smart Grid Applications



Digital Cellular Modem Rack System

GSM, CDMA

*Nuri technology-equipped meters supplied by meter manufacturers.

Full Range of Professional Services

- AMI Solution Architect
- Network Deployment
- Network Operations
- Integration of AMI Solutions with Existing IT, Operations and Asset Management Processes

Smart Meters Supported

Electric

Aidon GE
Elster Kamstrup
EDMI KEPCO

Gas

Actaris
Elster/Kromschroeder
Several Korean Brands

Water

Several Korean Brands

For a complete up-to-date list of meters supported, please contact us.